



INDOFINE Chemical Company, Inc.

121 Stryker Lane, Bldg. 30, Suite 1 • Hillsborough, NJ 08844 • U.S.A.

Phone: (908) 359-6778 • FAX: (908) 359-1179

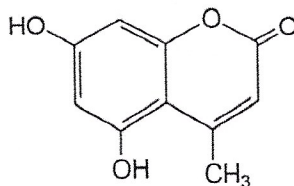
website: www.indofinechemical.com

e-mail: chemical@indofinechemical.com

CERTIFICATE OF ANALYSIS

Cat No.: D-120

<u>Product:</u>	5,7-DIHYDROXY-4-METHYLCOUMARIN
<u>CAS Number:</u>	[2107-76-8]
<u>Lot Number:</u>	0007162
<u>Molecular Formula:</u>	C ₁₀ H ₈ O ₄
<u>M.W.:</u>	192.17
<u>Melting Point:</u>	>270°C
<u>Appearance:</u>	Cream colored powder
<u>TLC:</u>	Chloroform:Methanol (9:1)
<u>Solubility:</u>	Soluble in DMSO
<u>Purity (HPLC):</u>	99.05%





INDOFINE Chemical Company, Inc.

121 Stryker Lane, Bldg. 30, Suite 1 • Hillsborough, NJ 08844 • U.S.A.

Phone: (908) 359-6778 • FAX: (908) 359-1179

website: www.indofinechemical.com

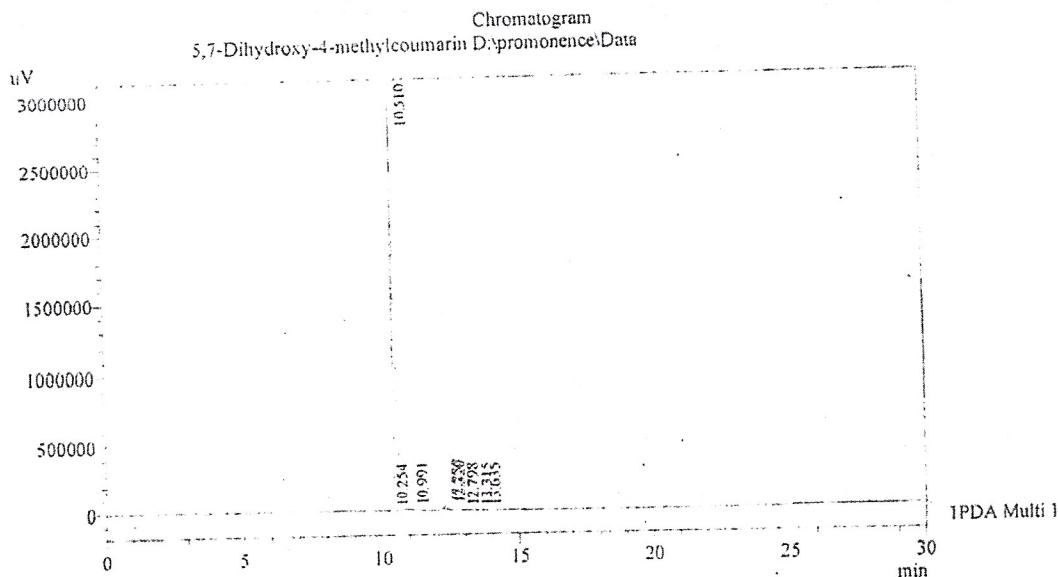
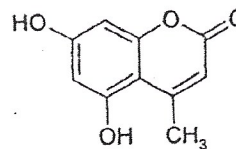
e-mail: chemical@indofinechemical.com

HPLC ANALYSIS

Acquired by : Sanjeev
 Sample Name : 5,7-Dihydroxy-4-methylcoumarin
 Sample ID : Lot No:-0007162
 Injection Volume : 20 uL
 Data Filename : 110212C.lcd
 Method Filename : Linear Gradient.M.lcm

Catalog No.: D-120
 Product name: 5,7-Dihydroxy-4-methylcoumarin
 Lot No.: 0007162

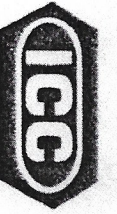
Column : LUNA C-18(2), (250mm x4.6mm 5.0µ)
 Flow : 1.000 mL/min.
 Mobile Phase : A(0.05% TFA in water) B(Acetonitrile)
 0.01 90 10
 12.0 10 90
 20.0 10 90
 25.0 90 10
 30.0 90 10



PDA Multi 1 / 230nm 4nm

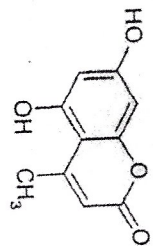
PeakTable

Peak#	Name	Ret. Time	Area	Area %	Relative Retention Time
1	RT:10.254	10.254	4427	0.03	0.98
2	RT:10.510	10.510	16454430	99.05	1.00
3	RT:10.991	10.991	7942	0.05	1.03
4	RT:12.230	12.230	92800	0.56	1.16
5	RT:12.320	12.320	22833	0.14	1.17
6	RT:12.798	12.798	8717	0.05	1.22
7	RT:13.315	13.315	13768	0.08	1.27
8	RT:13.635	13.635	8018	0.05	1.30
Total			16612935	100.00	



INDOFINE Chemical Company, Inc.
 121 STRYKER LANE
 BLDG. 30, SUITE 1
 HILLSBOROUGH, NJ 08844

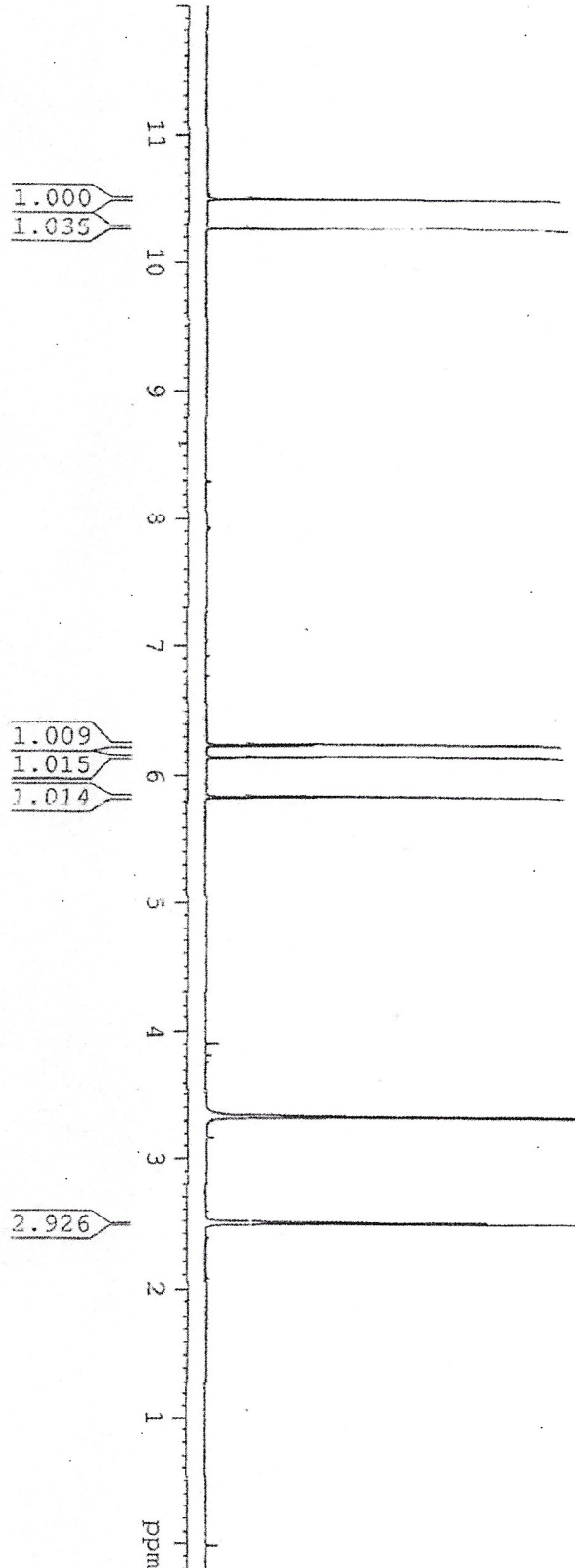
Catalog No.: D-120
 Product name: 5,7-Dihydroxy-4-methylcou
 Lot No.: 0007162



ICC-01
 1H IN DMSO
 AVANCE-600

SOLVENT DMSO
 NS 32
 DS 4
 SMH 10302.198 HZ
 FIDRES 0.337170 HZ
 AQ 1.3929453 SEC
 RG 2050
 SM 43.933 USDC
 DS 6.000 USDC
 FE 298.2 K
 D1 1.5003000 SEC
 PD 1

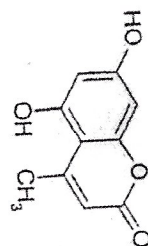
***** CHANNEL F1 *****
 SFC1
 P1 7.50 USDC
 P11 2.60 DB
 P11W 6.62534448 W
 SFO1 600.3345247 MHz
 P2 - Processing parameters
 S1 32768
 S2 600.3330716 MHz
 MDW EM
 SSB 0
 LB 0.30 HZ
 SB 0
 PC 1.00





INDOFINE Chemical Company, Inc.
 121 STRYKER LANE
 BLDG. 30, SUITE 1
 HILLSBOROUGH, NJ 08844

Catalog No.: D-120
 Product name: 5,7-Dihydroxy-4-methylcoumarin
 Lot No.: 0007162



ICC-01
 1H IN DMSO
 AVANCE-600

SOVENT DMSO
 NS 32
 SWS 4
 FIDRES 10302.198 Hz
 AQ 0.15170 Hz
 RG 1.3599455 sec
 2050
 48.933 USEC
 8.00 USEC
 298.2 K
 1.50000000 SEC
 TD0 1

***** CHANNEL F1 *****
 NUCl: 1H
 F1: 7.50 USEC
 P1: 2.60 DB
 P1M: 6.6288448 W
 SF01: 600.3145247 MHz

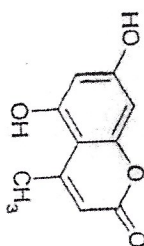
F2 - Processing parameters
 S1: 32768
 S2: 600.330216 MHz
 NDM: 0 SM
 SSB: 0
 LB: 0.30 Hz
 GB: 0
 PC: 1.00

3.223
 3.221
 3.219
 3.217
 3.215
 3.213
 3.211
 3.209
 3.207
 3.205
 3.203
 3.201
 3.199
 3.197
 3.195
 3.193
 3.191
 3.189
 3.187
 3.185
 3.183
 3.181
 3.179
 3.177
 3.175
 3.173
 3.171
 3.169
 3.167
 3.165
 3.163
 3.161
 3.159
 3.157
 3.155
 3.153
 3.151
 3.149
 3.147
 3.145
 3.143
 3.141
 3.139
 3.137
 3.135
 3.133
 3.131
 3.129
 3.127
 3.125
 3.123
 3.121
 3.119
 3.117
 3.115
 3.113
 3.111
 3.109
 3.107
 3.105
 3.103
 3.101
 3.099
 3.097
 3.095
 3.093
 3.091
 3.089
 3.087
 3.085
 3.083
 3.081
 3.079
 3.077
 3.075
 3.073
 3.071
 3.069
 3.067
 3.065
 3.063
 3.061
 3.059
 3.057
 3.055
 3.053
 3.051
 3.049
 3.047
 3.045
 3.043
 3.041
 3.039
 3.037
 3.035
 3.033
 3.031
 3.029
 3.027
 3.025
 3.023
 3.021
 3.019
 3.017
 3.015
 3.013
 3.011
 3.009
 3.007
 3.005
 3.003
 3.001
 2.999
 2.997
 2.995
 2.993
 2.991
 2.989
 2.987
 2.985
 2.983
 2.981
 2.979
 2.977
 2.975
 2.973
 2.971
 2.969
 2.967
 2.965
 2.963
 2.961
 2.959
 2.957
 2.955
 2.953
 2.951
 2.949
 2.947
 2.945
 2.943
 2.941
 2.939
 2.937
 2.935
 2.933
 2.931
 2.929
 2.927
 2.925
 2.923
 2.921
 2.919
 2.917
 2.915
 2.913
 2.911
 2.909
 2.907
 2.905
 2.903
 2.901
 2.899
 2.897
 2.895
 2.893
 2.891
 2.889
 2.887
 2.885
 2.883
 2.881
 2.879
 2.877
 2.875
 2.873
 2.871
 2.869
 2.867
 2.865
 2.863
 2.861
 2.859
 2.857
 2.855
 2.853
 2.851
 2.849
 2.847
 2.845
 2.843
 2.841
 2.839
 2.837
 2.835
 2.833
 2.831
 2.829
 2.827
 2.825
 2.823
 2.821
 2.819
 2.817
 2.815
 2.813
 2.811
 2.809
 2.807
 2.805
 2.803
 2.801
 2.799
 2.797
 2.795
 2.793
 2.791
 2.789
 2.787
 2.785
 2.783
 2.781
 2.779
 2.777
 2.775
 2.773
 2.771
 2.769
 2.767
 2.765
 2.763
 2.761
 2.759
 2.757
 2.755
 2.753
 2.751
 2.749
 2.747
 2.745
 2.743
 2.741
 2.739
 2.737
 2.735
 2.733
 2.731
 2.729
 2.727
 2.725
 2.723
 2.721
 2.719
 2.717
 2.715
 2.713
 2.711
 2.709
 2.707
 2.705
 2.703
 2.701
 2.699
 2.697
 2.695
 2.693
 2.691
 2.689
 2.687
 2.685
 2.683
 2.681
 2.679
 2.677
 2.675
 2.673
 2.671
 2.669
 2.667
 2.665
 2.663
 2.661
 2.659
 2.657
 2.655
 2.653
 2.651
 2.649
 2.647
 2.645
 2.643
 2.641
 2.639
 2.637
 2.635
 2.633
 2.631
 2.629
 2.627
 2.625
 2.623
 2.621
 2.619
 2.617
 2.615
 2.613
 2.611
 2.609
 2.607
 2.605
 2.603
 2.601
 2.599
 2.597
 2.595
 2.593
 2.591
 2.589
 2.587
 2.585
 2.583
 2.581
 2.579
 2.577
 2.575
 2.573
 2.571
 2.569
 2.567
 2.565
 2.563
 2.561
 2.559
 2.557
 2.555
 2.553
 2.551
 2.549
 2.547
 2.545
 2.543
 2.541
 2.539
 2.537
 2.535
 2.533
 2.531
 2.529
 2.527
 2.525
 2.523
 2.521
 2.519
 2.517
 2.515
 2.513
 2.511
 2.509
 2.507
 2.505
 2.503
 2.501
 2.499
 2.497
 2.495
 2.493
 2.491
 2.489
 2.487
 2.485
 2.483
 2.481
 2.479
 2.477
 2.475
 2.473
 2.471
 2.469
 2.467
 2.465
 2.463
 2.461
 2.459
 2.457
 2.455
 2.453
 2.451
 2.449
 2.447
 2.445
 2.443
 2.441
 2.439
 2.437
 2.435
 2.433
 2.431
 2.429
 2.427
 2.425
 2.423
 2.421
 2.419
 2.417
 2.415
 2.413
 2.411
 2.409
 2.407
 2.405
 2.403
 2.401
 2.399
 2.397
 2.395
 2.393
 2.391
 2.389
 2.387
 2.385
 2.383
 2.381
 2.379
 2.377
 2.375
 2.373
 2.371
 2.369
 2.367
 2.365
 2.363
 2.361
 2.359
 2.357
 2.355
 2.353
 2.351
 2.349
 2.347
 2.345
 2.343
 2.341
 2.339
 2.337
 2.335
 2.333
 2.331
 2.329
 2.327
 2.325
 2.323
 2.321
 2.319
 2.317
 2.315
 2.313
 2.311
 2.309
 2.307
 2.305
 2.303
 2.301
 2.299
 2.297
 2.295
 2.293
 2.291
 2.289
 2.287
 2.285
 2.283
 2.281
 2.279
 2.277
 2.275
 2.273
 2.271
 2.269
 2.267
 2.265
 2.263
 2.261
 2.259
 2.257
 2.255
 2.253
 2.251
 2.249
 2.247
 2.245
 2.243
 2.241
 2.239
 2.237
 2.235
 2.233
 2.231
 2.229
 2.227
 2.225
 2.223
 2.221
 2.219
 2.217
 2.215
 2.213
 2.211
 2.209
 2.207
 2.205
 2.203
 2.201
 2.199
 2.197
 2.195
 2.193
 2.191
 2.189
 2.187
 2.185
 2.183
 2.181
 2.179
 2.177
 2.175
 2.173
 2.171
 2.169
 2.167
 2.165
 2.163
 2.161
 2.159
 2.157
 2.155
 2.153
 2.151
 2.149
 2.147
 2.145
 2.143
 2.141
 2.139
 2.137
 2.135
 2.133
 2.131
 2.129
 2.127
 2.125
 2.123
 2.121
 2.119
 2.117
 2.115
 2.113
 2.111
 2.109
 2.107
 2.105
 2.103
 2.101
 2.099
 2.097
 2.095
 2.093
 2.091
 2.089
 2.087
 2.085
 2.083
 2.081
 2.079
 2.077
 2.075
 2.073
 2.071
 2.069
 2.067
 2.065
 2.063
 2.061
 2.059
 2.057
 2.055
 2.053
 2.051
 2.049
 2.047
 2.045
 2.043
 2.041
 2.039
 2.037
 2.035
 2.033
 2.031
 2.029
 2.027
 2.025
 2.023
 2.021
 2.019
 2.017
 2.015
 2.013
 2.011
 2.009
 2.007
 2.005
 2.003
 2.001
 1.999
 1.997
 1.995
 1.993
 1.991
 1.989
 1.987
 1.985
 1.983
 1.981
 1.979
 1.977
 1.975
 1.973
 1.971
 1.969
 1.967
 1.965
 1.963
 1.961
 1.959
 1.957
 1.955
 1.953
 1.951
 1.949
 1.947
 1.945
 1.943
 1.941
 1.939
 1.937
 1.935
 1.933
 1.931
 1.929
 1.927
 1.925
 1.923
 1.921
 1.919
 1.917
 1.915
 1.913
 1.911
 1.909
 1.907
 1.905
 1.903
 1.901
 1.899
 1.897
 1.895
 1.893
 1.891
 1.889
 1.887
 1.885
 1.883
 1.881
 1.879
 1.877
 1.875
 1.873
 1.871
 1.869
 1.867
 1.865
 1.863
 1.861
 1.859
 1.857
 1.855
 1.853
 1.851
 1.849
 1.847
 1.845
 1.843
 1.841
 1.839
 1.837
 1.835
 1.833
 1.831
 1.829
 1.827
 1.825
 1.823
 1.821
 1.819
 1.817
 1.815
 1.813
 1.811
 1.809
 1.807
 1.805
 1.803
 1.801
 1.799
 1.797
 1.795
 1.793
 1.791
 1.789
 1.787
 1.785
 1.783
 1.781
 1.779
 1.777
 1.775
 1.773
 1.771
 1.769
 1.767
 1.765
 1.763
 1.761
 1.759
 1.757
 1.755
 1.753
 1.751
 1.749
 1.747
 1.745
 1.743
 1.741
 1.739
 1.737
 1.735
 1.733
 1.731
 1.729
 1.727
 1.725
 1.723
 1.721
 1.719
 1.717
 1.715
 1.713
 1.711
 1.709
 1.707
 1.705
 1.703
 1.701
 1.699
 1.697
 1.695
 1.693
 1.691
 1.689
 1.687
 1.685
 1.683
 1.681
 1.679
 1.677
 1.675
 1.673
 1.671
 1.669
 1.667
 1.665
 1.663
 1.661
 1.659
 1.657
 1.655
 1.653
 1.651
 1.649
 1.647
 1.645
 1.643
 1.641
 1.639
 1.637
 1.635
 1.633
 1.631
 1.629
 1.627
 1.625
 1.623
 1.621
 1.619
 1.617
 1.615
 1.613
 1.611
 1.609
 1.607
 1.605
 1.603
 1.601
 1.599
 1.597
 1.595
 1.593
 1.591
 1.589
 1.587
 1.585
 1.583
 1.581
 1.579
 1.577
 1.575
 1.573
 1.571
 1.569
 1.567
 1.565
 1.563
 1.561
 1.559
 1.557
 1.555
 1.553
 1.551
 1.549
 1.547
 1.545
 1.543
 1.541
 1.539
 1.537
 1.535
 1.533
 1.531
 1.529
 1.527
 1.525
 1.523
 1.521
 1.519
 1.517
 1.515
 1.513
 1.511
 1.509
 1.507
 1.505
 1.503
 1.501
 1.499
 1.497
 1.495
 1.493
 1.491
 1.489
 1.487
 1.485
 1.483
 1.481
 1.479
 1.477
 1.475
 1.473
 1.471
 1.469
 1.467
 1.465
 1.463
 1.461
 1.459
 1.457
 1.455
 1.453
 1.451
 1.449
 1.447
 1.445
 1.443
 1.441
 1.439
 1.437
 1.435
 1.433
 1.431
 1.429
 1.427
 1.425
 1.423
 1.421
 1.419
 1.417
 1.415
 1.413
 1.411
 1.409
 1.407
 1.405
 1.403
 1.401
 1.399
 1.397
 1.395
 1.393
 1.391
 1.389
 1.387
 1.385
 1.383
 1.381
 1.379
 1.377
 1.375
 1.373
 1.371
 1.369
 1.367
 1.365
 1.363
 1.361
 1.359
 1.357
 1.355
 1.353
 1.351
 1.349
 1.347
 1.345
 1.343
 1.341
 1.339
 1.337
 1.335
 1.333
 1.331
 1.329
 1.327
 1.325
 1.323
 1.321
 1.319
 1.317
 1.315
 1.313
 1.311
 1.309
 1.307
 1.305
 1.303
 1.301
 1.299
 1.297
 1.295
 1.293
 1.291
 1.289
 1.287
 1.285
 1.283
 1.281
 1.279
 1.277
 1.275
 1.273
 1.271
 1.269
 1.267
 1.265
 1.263
 1.261
 1.259
 1.257
 1.255
 1.253
 1.251
 1.249
 1.247
 1.245
 1.243
 1.241
 1.239
 1.237
 1.235
 1.233
 1.231
 1.229
 1.227
 1.225
 1.223
 1.221
 1.219
 1.217
 1.215
 1.213
 1.211
 1.209
 1.207
 1.205
 1.203
 1.201
 1.199
 1.197
 1.195
 1.193
 1.191
 1.189
 1.187
 1.185
 1.183
 1.181
 1.179
 1.177
 1.175
 1.173
 1.171
 1.169
 1.167
 1.165
 1.163
 1.161
 1.159
 1.157
 1.155
 1.153
 1.151
 1.149
 1.147
 1.145
 1.143
 1.141
 1.139
 1.137
 1.135
 1.133
 1.131
 1.129
 1.127
 1.125
 1.123
 1.121
 1.119
 1.117
 1.115
 1.113
 1.111
 1.109
 1.107
 1.105
 1.103
 1.101
 1.099
 1.097
 1.095
 1.093
 1.091
 1.089
 1.087
 1.085
 1.083
 1.081
 1.079
 1.077
 1.075
 1.073
 1.071
 1.069
 1.067
 1.065
 1.063
 1.061
 1.059
 1.057
 1.055
 1.053
 1.051
 1.049
 1.047
 1.045
 1.043
 1.041
 1.039
 1.037
 1.035
 1.033
 1.031
 1.029
 1.027
 1.025
 1.023
 1.021
 1.019
 1.017
 1.015
 1.013
 1.011
 1.009
 1.007
 1.005
 1.003
 1.001
 0.999
 0.997
 0.995
 0.993
 0.991
 0.989
 0.987
 0.985
 0.983
 0.981
 0.979
 0.977
 0.975
 0.973
 0.971
 0.969
 0.967
 0.965
 0.963
 0.961
 0.959
 0.957
 0.955
 0.953
 0.951
 0.949
 0.947
 0.945
 0.943
 0.941
 0.939
 0.937
 0.935
 0.933
 0.931
 0.929
 0.927
 0.925
 0.923
 0.921
 0.919
 0.917
 0.915



INDOFINE Chemical Company, Inc.
121 STRYKER LANE
BLDG. 30, SUITE 1
HILLSBOROUGH, NJ 08844

Catalog No.: D-120
Product name: 5,7-Dihydroxy-4-methylco
Lot No.: 0007162



ICG-01
1H IN DMSO
AVANCE-600

SOLVENT DMSO
NS 32
DS 4
SWH 10102.198 HZ
FIDRES 0.357179 HZ
AQ 1.199455 SEC
RG 2003
SM 48.533 URG
SE 6.00 USEC
SF 298.2 K
SI 1.50000000 SEC
TD0 1

***** CHANNEL F1 *****
MODE 1H
P1 7.28 URG
P2 2.00 UB
P3 6.62584448 W
SFO1 600.3345247 MHZ

F2 - Processing parameters
SI 32768
SF 600.3300116 MHZ
MDM EN
SSB 0
LB 0.30 HZ
GB 0
PC 1.00

